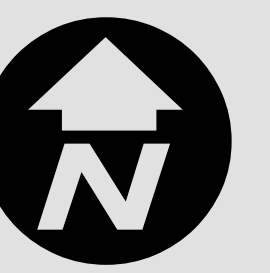


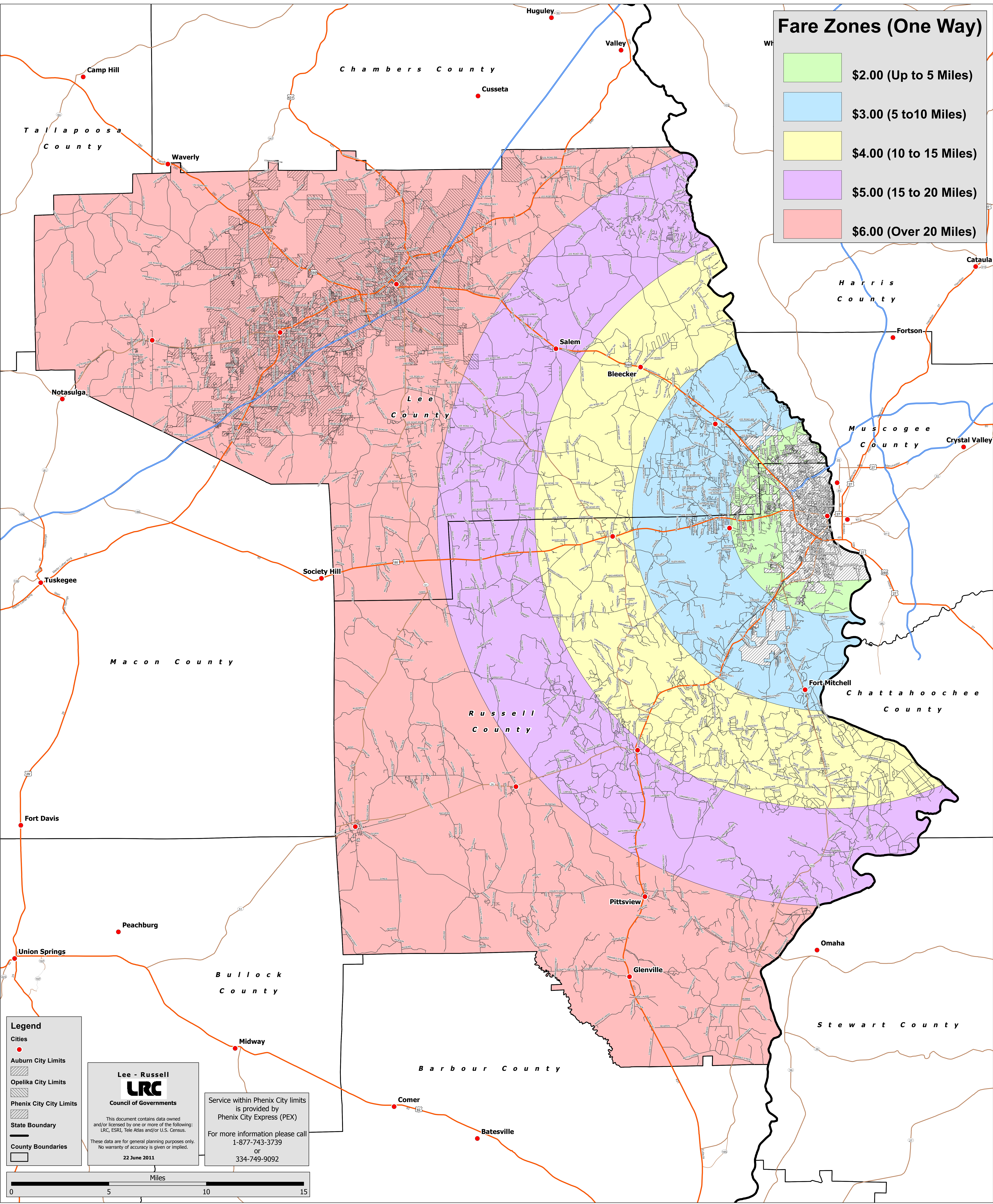
# LEE-RUSSELL PUBLIC TRANSIT

## Phenix City Connection Fare Zones



### Fare Zones (One Way)

	\$2.00 (Up to 5 Miles)
	\$3.00 (5 to 10 Miles)
	\$4.00 (10 to 15 Miles)
	\$5.00 (15 to 20 Miles)
	\$6.00 (Over 20 Miles)



**Legend**

- Cities ●
- Auburn City Limits
- Opelika City Limits
- Phenix City City Limits
- State Boundary
- County Boundaries

**Lee - Russell**  
**LRC**  
Council of Governments

This document contains data owned and/or licensed by one or more of the following: LRC, ESRI, Tele Atlas and/or U.S. Census.

These data are for general planning purposes only. No warranty of accuracy is given or implied.

22 June 2011

Service within Phenix City limits is provided by Phenix City Express (PEX)

For more information please call  
1-877-743-3739  
or  
334-749-9092

